

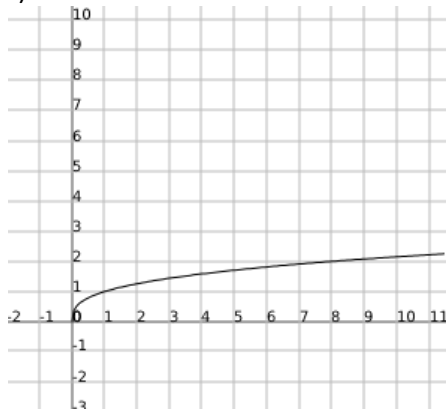
1. Find the inverse of each one-to one function.

a)  $f(x) = \frac{1}{2}x - 1$

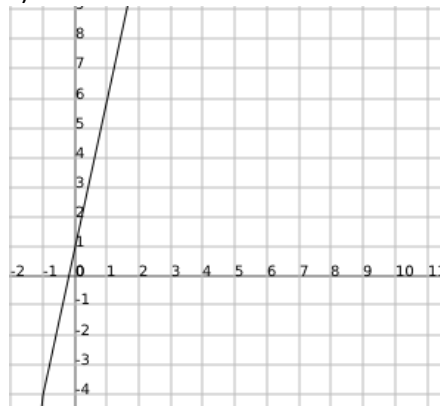
b)  $f(x) = (x - 5)^3$

2. Graph the inverse of each function on the same axes

a)



b)



3. If  $f(x) = x^3 - 5$ , show that  $f^{-1}(x) = \sqrt[3]{x + 5}$ .