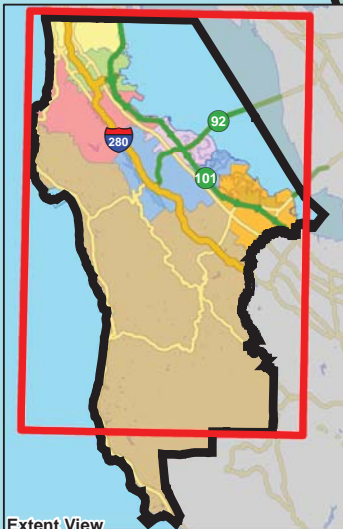
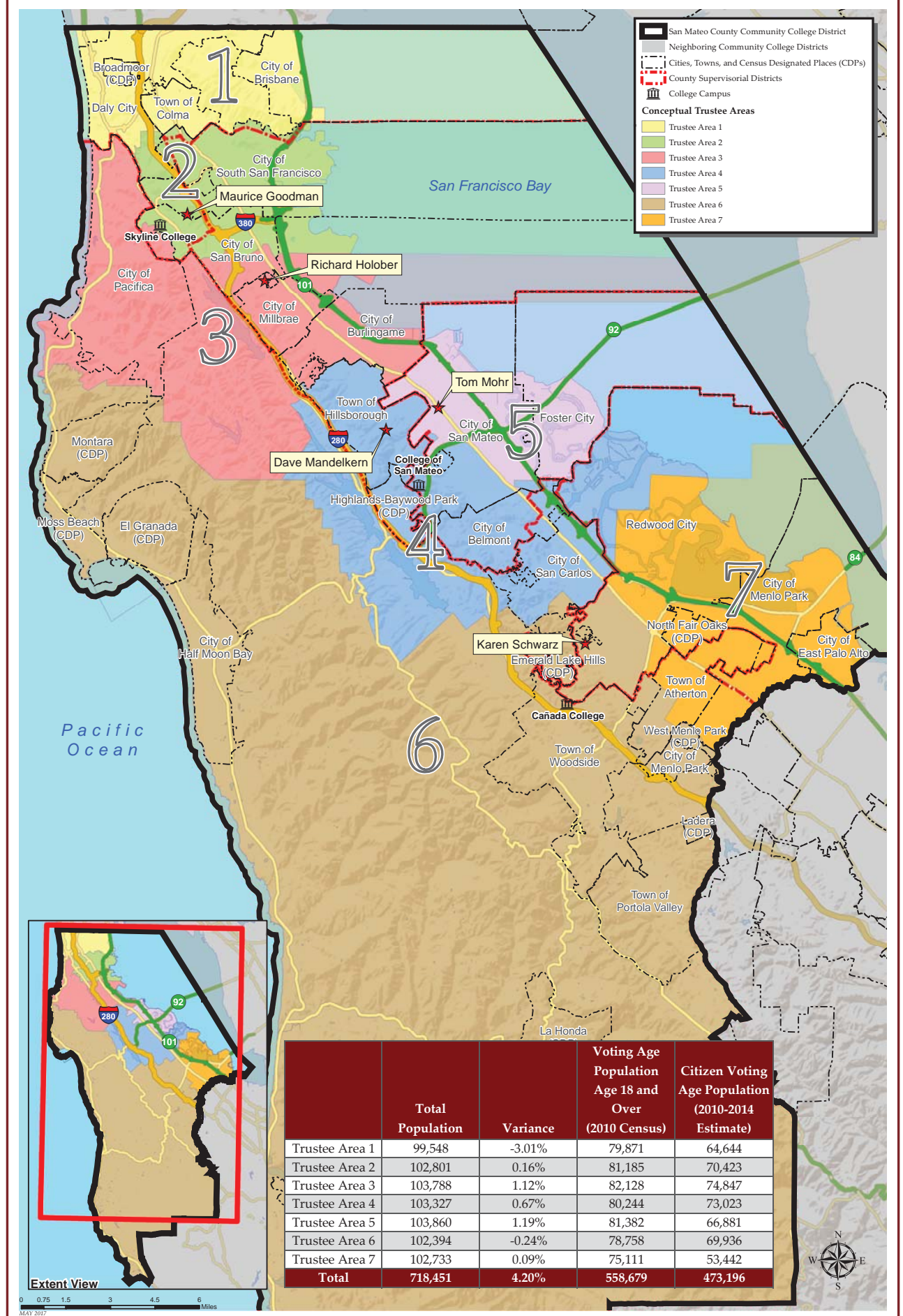


# SAN MATEO COUNTY COMMUNITY COLLEGE DISTRICT CONCEPTUAL TRUSTEE AREAS - SCENARIO 3



0 0.75 1.5 3 4.5 6 Miles  
MAY 2017

## San Mateo County Community College District

### Conceptual Trustee Areas - Scenario 3

#### Total Population

	Area 1	Area 2	Area 3	Area 4	Area 5	Area 6	Area 7	Variance
Population	99,548	102,801	103,788	103,327	103,860	102,394	102,733	
Population Variance	-3,088	165	1,152	691	1,224	-242	97	
	-3.01%	0.16%	1.12%	0.67%	1.19%	-0.24%	0.09%	4.20%
Hispanic/Latino	25,234	30,827	17,232	10,941	24,252	24,395	49,621	
	25.35%	29.99%	16.60%	10.59%	23.35%	23.82%	48.30%	
White	16,161	24,412	53,927	64,341	44,412	66,798	33,558	
	16.23%	23.75%	51.96%	62.27%	42.76%	65.24%	32.67%	
Black/ African American	3,152	2,379	1,688	1,242	2,291	973	7,038	
	3.17%	2.31%	1.63%	1.20%	2.21%	0.95%	6.85%	
American Indian/ Alaska Native	130	198	202	123	131	154	187	
	0.13%	0.19%	0.19%	0.12%	0.13%	0.15%	0.18%	
Asian	50,892	38,744	25,284	21,592	26,613	6,496	6,313	
	51.12%	37.69%	24.36%	20.90%	25.62%	6.34%	6.15%	
Native Hawaiian/ Other Pacific Islander	676	2,231	967	429	2,002	405	3,174	
	0.68%	2.17%	0.93%	0.42%	1.93%	0.40%	3.09%	
Other	470	475	492	390	368	254	260	
	0.47%	0.46%	0.47%	0.38%	0.35%	0.25%	0.25%	
Two or More Races	2,833	3,535	3,996	4,269	3,791	2,919	2,582	
	2.85%	3.44%	3.85%	4.13%	3.65%	2.85%	2.51%	

#### Citizens by Voting Age Population Estimate (2010-2014)

	Area 1	Area 2	Area 3	Area 4	Area 5	Area 6	Area 7	Variance
Population	64,644	70,423	74,847	73,023	66,881	69,936	53,442	
Population Variance	-2,955	2,824	7,248	5,424	-718	2,337	-14,157	
	-4.37%	4.18%	10.72%	8.02%	-1.06%	3.46%	-20.94%	
Hispanic/Latino	12,264	15,488	11,145	6,948	9,603	10,204	15,038	
	18.97%	21.99%	14.89%	9.51%	14.36%	14.59%	28.14%	
White	12,374	20,936	42,633	48,567	36,779	52,714	25,595	
	19.14%	29.73%	56.96%	66.51%	54.99%	75.37%	47.89%	
Black/ African American	2,560	1,898	1,385	1,167	1,966	809	5,092	
	3.96%	2.70%	1.85%	1.60%	2.94%	1.16%	9.53%	
American Indian/ Alaska Native	108	123	206	120	108	109	83	
	0.17%	0.17%	0.28%	0.16%	0.16%	0.16%	0.16%	
Asian	35,640	28,571	16,889	14,007	15,654	4,637	4,564	
	55.13%	40.57%	22.56%	19.18%	23.41%	6.63%	8.54%	
Native Hawaiian/ Other Pacific Islander	173	1,611	609	178	729	150	1,732	
	0.27%	2.29%	0.81%	0.24%	1.09%	0.21%	3.24%	
Other	0	0	0	0	0	0	0	
	0.00%	0.00%	0.00%	0.00%	0.00%	0.00%	0.00%	
Two or More Races	1,525	1,796	1,980	2,036	2,042	1,313	1,338	
	2.36%	2.55%	2.65%	2.79%	3.05%	1.88%	2.50%	