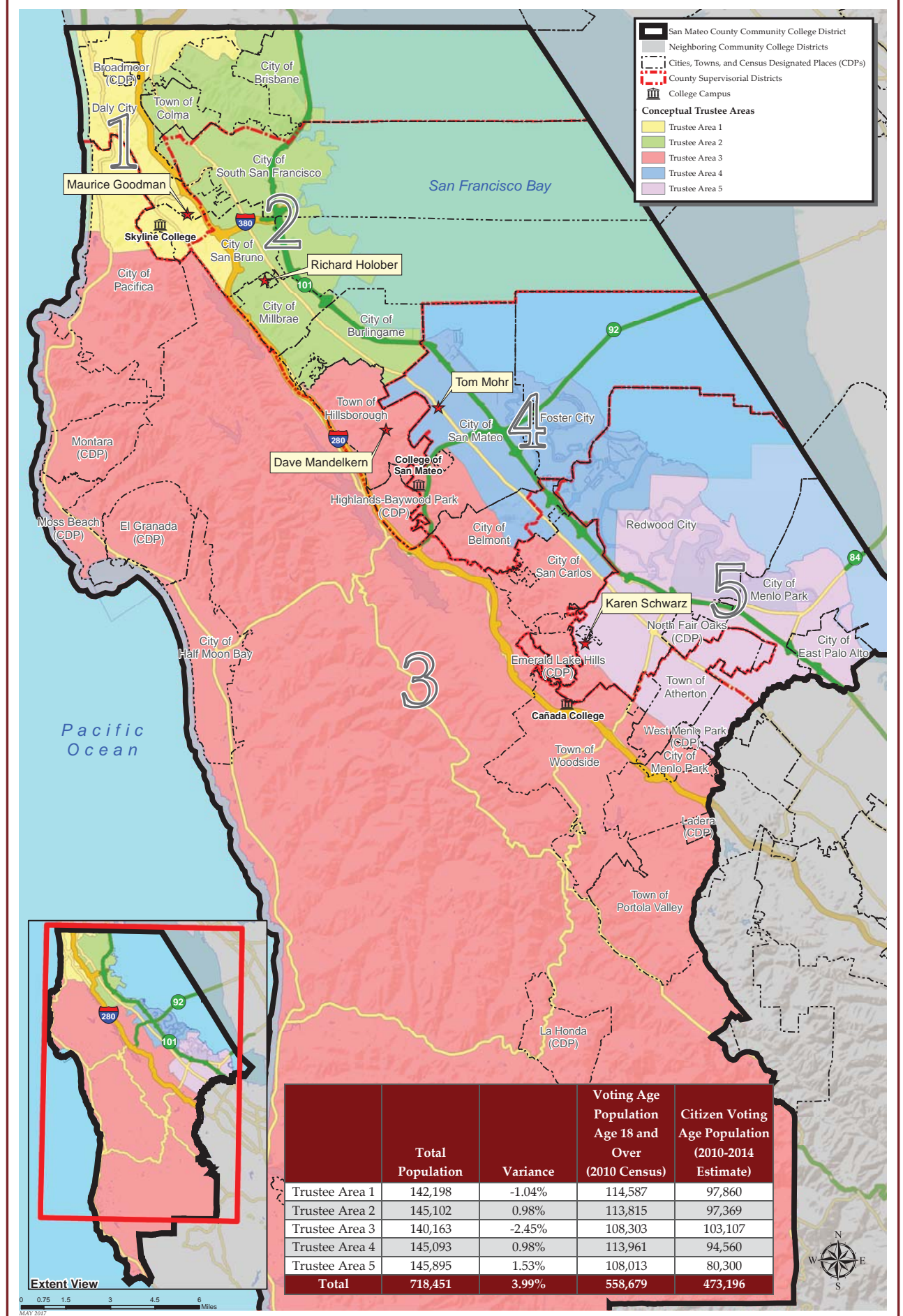


SAN MATEO COUNTY COMMUNITY COLLEGE DISTRICT CONCEPTUAL TRUSTEE AREAS - SCENARIO 1



San Mateo County Community College District

Conceptual Trustee Areas - Scenario 1

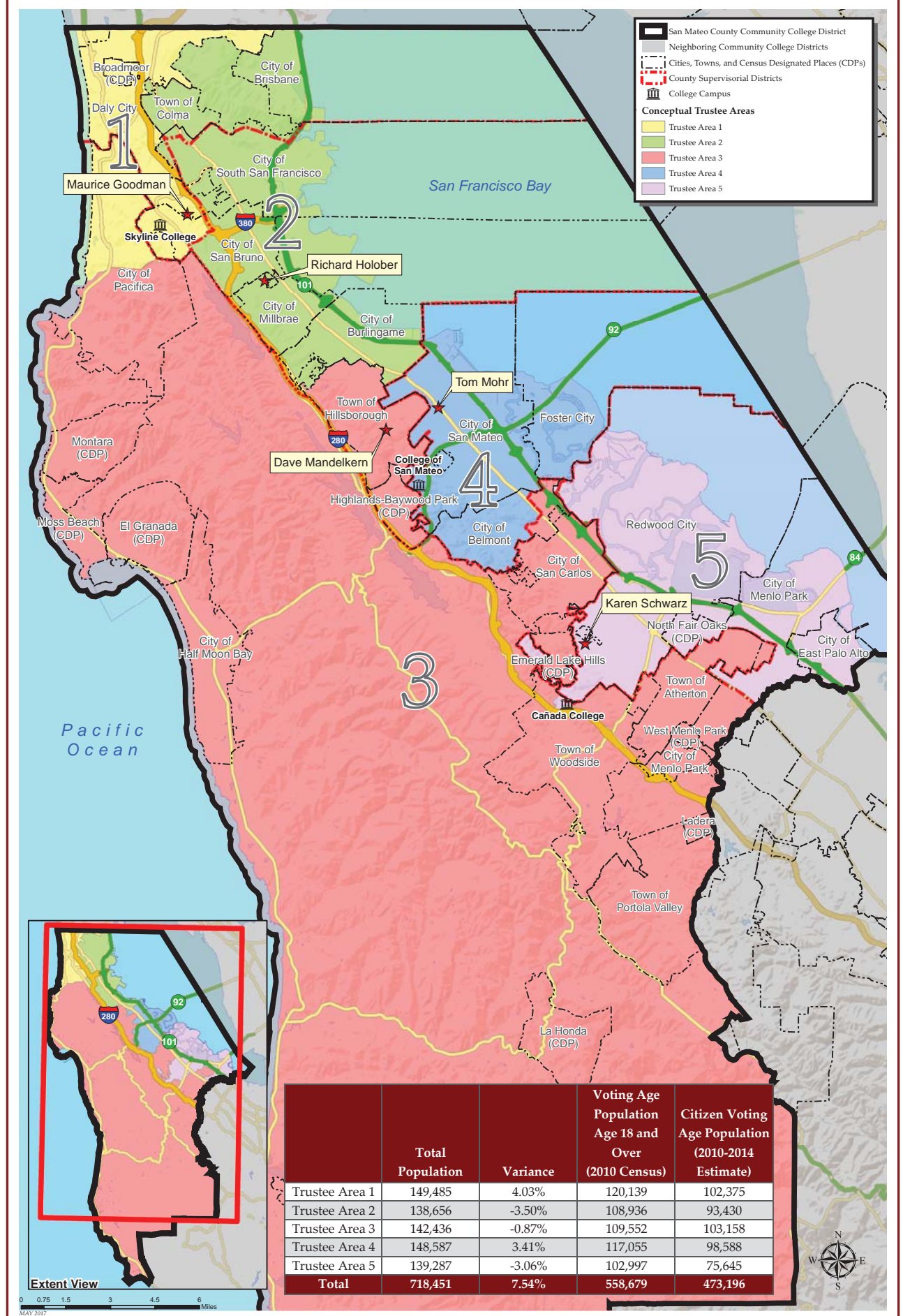
Total Population

	Trustee Area 1	Trustee Area 2	Trustee Area 3	Trustee Area 4	Trustee Area 5	Variance
Population	142,198	145,102	140,163	145,093	145,895	
Population Variance	-1,492	1,412	-3,527	1,403	2,205	
	-1.04%	0.98%	-2.45%	0.98%	1.53%	3.99%
Hispanic/Latino	28,953	41,467	17,707	30,014	64,361	
	20.36%	28.58%	12.63%	20.69%	44.11%	
White	30,087	51,383	98,437	66,917	56,785	
	21.16%	35.41%	70.23%	46.12%	38.92%	
Black/ African American	4,502	2,519	1,068	3,027	7,647	
	3.17%	1.74%	0.76%	2.09%	5.24%	
American Indian/ Alaska Native	215	245	225	185	255	
	0.15%	0.17%	0.16%	0.13%	0.17%	
Asian	71,766	41,578	16,826	36,655	9,109	
	50.47%	28.65%	12.00%	25.26%	6.24%	
Native Hawaiian/ Other Pacific Islander	1,330	2,462	390	2,222	3,480	
	0.94%	1.70%	0.28%	1.53%	2.39%	
Other	683	688	415	535	388	
	0.48%	0.47%	0.30%	0.37%	0.27%	
Two or More Races	4,662	4,760	5,095	5,538	3,870	
	3.28%	3.28%	3.64%	3.82%	2.65%	

Citizens by Voting Age Population Estimate (2010-2014)

	Trustee Area 1	Trustee Area 2	Trustee Area 3	Trustee Area 4	Trustee Area 5	Variance
Population	97,860	97,369	103,107	94,560	80,300	
Population Variance	3,221	2,730	8,468	-79	-14,339	
	3.40%	2.88%	8.95%	-0.08%	-15.15%	
Hispanic/Latino	15,704	21,007	10,155	13,212	20,612	
	16.05%	21.57%	9.85%	13.97%	25.67%	
White	23,829	41,602	77,244	53,384	43,539	
	24.35%	42.73%	74.92%	56.46%	54.22%	
Black/ African American	3,799	1,845	984	2,634	5,615	
	3.88%	1.89%	0.95%	2.79%	6.99%	
American Indian/ Alaska Native	234	195	83	167	178	
	0.24%	0.20%	0.08%	0.18%	0.22%	
Asian	50,727	29,176	12,010	21,306	6,743	
	51.84%	29.96%	11.65%	22.53%	8.40%	
Native Hawaiian/ Other Pacific Islander	992	1,401	173	803	1,813	
	1.01%	1.44%	0.17%	0.85%	2.26%	
Other	0	0	0	0	0	
	0.00%	0.00%	0.00%	0.00%	0.00%	
Two or More Races	2,575	2,143	2,458	3,054	1,800	
	2.63%	2.20%	2.38%	3.23%	2.24%	

SAN MATEO COUNTY COMMUNITY COLLEGE DISTRICT CONCEPTUAL TRUSTEE AREAS - SCENARIO 2

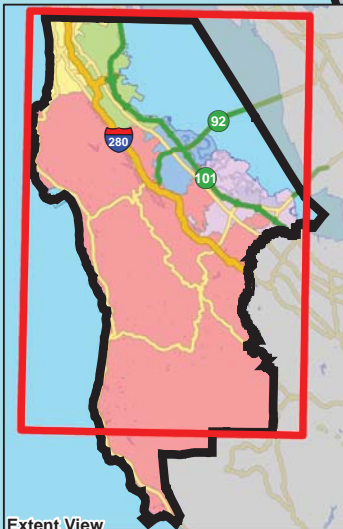


San Mateo County Community College District

- Neighboring Community College Districts
- Cities, Towns, and Census Designated Places (CDPs)
- County Supervisorial Districts
- College Campus

Conceptual Trustee Areas

- Trustee Area 1
- Trustee Area 2
- Trustee Area 3
- Trustee Area 4
- Trustee Area 5



	Total Population	Variance	Voting Age Population Age 18 and Over (2010 Census)	Citizen Voting Age Population (2010-2014 Estimate)
Trustee Area 1	149,485	4.03%	120,139	102,375
Trustee Area 2	138,656	-3.50%	108,936	93,430
Trustee Area 3	142,436	-0.87%	109,552	103,158
Trustee Area 4	148,587	3.41%	117,055	98,588
Trustee Area 5	139,287	-3.06%	102,997	75,645
Total	718,451	7.54%	558,679	473,196

MAY 2017

San Mateo County Community College District

Conceptual Trustee Areas - Scenario 2

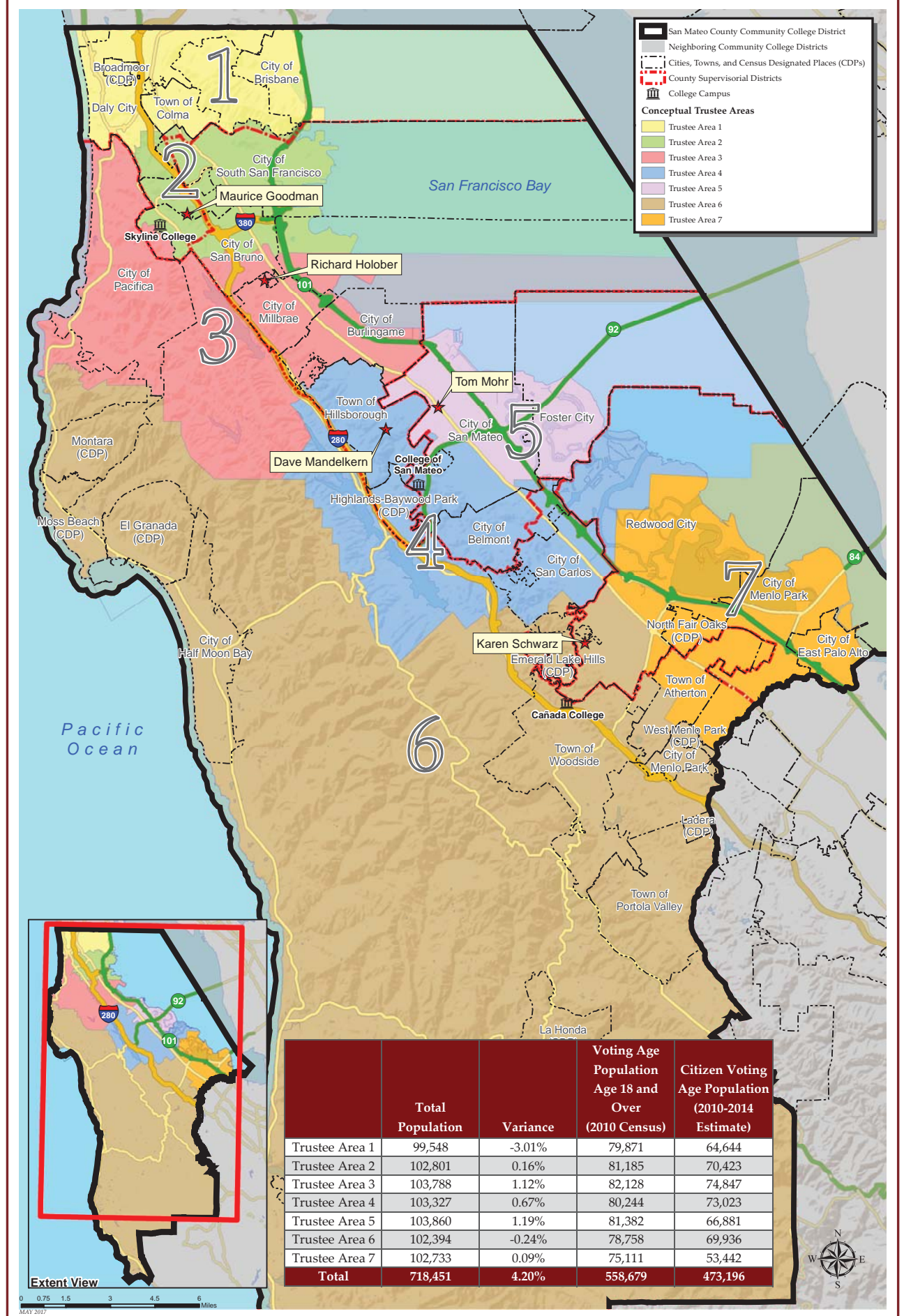
Total Population

	Trustee Area 1	Trustee Area 2	Trustee Area 3	Trustee Area 4	Trustee Area 5	Variance
Population	149,485	138,656	142,436	148,587	139,287	
Population Variance	5,795	-5,034	-1,254	4,897	-4,403	7.54%
	4.03%	-3.50%	-0.87%	3.41%	-3.06%	
Hispanic/Latino	32,083	38,483	17,769	29,941	64,226	
	21.46%	27.75%	12.48%	20.15%	46.11%	
White	29,038	52,998	102,065	71,287	48,221	
	19.43%	38.22%	71.66%	47.98%	34.62%	
Black/ African American	4,878	2,149	1,098	2,918	7,720	
	3.26%	1.55%	0.77%	1.96%	5.54%	
American Indian/ Alaska Native	211	249	222	197	246	
	0.14%	0.18%	0.16%	0.13%	0.18%	
Asian	76,313	37,108	15,433	35,839	11,241	
	51.05%	26.76%	10.84%	24.12%	8.07%	
Native Hawaiian/ Other Pacific Islander	1,442	2,352	415	2,249	3,426	
	0.96%	1.70%	0.29%	1.51%	2.46%	
Other	675	701	412	521	400	
	0.45%	0.51%	0.29%	0.35%	0.29%	
Two or More Races	4,845	4,616	5,022	5,635	3,807	
	3.24%	3.33%	3.53%	3.79%	2.73%	

Citizens by Voting Age Population Estimate (2010-2014)

	Trustee Area 1	Trustee Area 2	Trustee Area 3	Trustee Area 4	Trustee Area 5	Variance
Population	102,375	93,430	103,158	98,588	75,645	
Population Variance	7,736	-1,209	8,519	3,949	-18,994	
	8.17%	-1.28%	9.00%	4.17%	-20.07%	
Hispanic/Latino	16,739	20,019	9,676	13,276	20,980	
	16.35%	21.43%	9.38%	13.47%	27.73%	
White	23,585	42,293	78,905	57,202	37,613	
	23.04%	45.27%	76.49%	58.02%	49.72%	
Black/ African American	4,045	1,614	987	2,544	5,687	
	3.95%	1.73%	0.96%	2.58%	7.52%	
American Indian/ Alaska Native	198	231	61	162	205	
	0.19%	0.25%	0.06%	0.16%	0.27%	
Asian	54,133	25,801	11,013	21,391	7,624	
	52.88%	27.62%	10.68%	21.70%	10.08%	
Native Hawaiian/ Other Pacific Islander	1,017	1,376	152	833	1,804	
	0.99%	1.47%	0.15%	0.84%	2.38%	
Other	0	0	0	0	0	
	0.00%	0.00%	0.00%	0.00%	0.00%	
Two or More Races	2,658	2,096	2,364	3,180	1,732	
	2.60%	2.24%	2.29%	3.23%	2.29%	

SAN MATEO COUNTY COMMUNITY COLLEGE DISTRICT CONCEPTUAL TRUSTEE AREAS - SCENARIO 3



Extent View



MAY 2017

San Mateo County Community College District

Conceptual Trustee Areas - Scenario 3

Total Population

	Area 1	Area 2	Area 3	Area 4	Area 5	Area 6	Area 7	Variance
Population	99,548	102,801	103,788	103,327	103,860	102,394	102,733	
Population Variance	-3,088	165	1,152	691	1,224	-242	97	
	-3.01%	0.16%	1.12%	0.67%	1.19%	-0.24%	0.09%	4.20%
Hispanic/Latino	25,234	30,827	17,232	10,941	24,252	24,395	49,621	
	25.35%	29.99%	16.60%	10.59%	23.35%	23.82%	48.30%	
White	16,161	24,412	53,927	64,341	44,412	66,798	33,558	
	16.23%	23.75%	51.96%	62.27%	42.76%	65.24%	32.67%	
Black/ African American	3,152	2,379	1,688	1,242	2,291	973	7,038	
	3.17%	2.31%	1.63%	1.20%	2.21%	0.95%	6.85%	
American Indian/ Alaska Native	130	198	202	123	131	154	187	
	0.13%	0.19%	0.19%	0.12%	0.13%	0.15%	0.18%	
Asian	50,892	38,744	25,284	21,592	26,613	6,496	6,313	
	51.12%	37.69%	24.36%	20.90%	25.62%	6.34%	6.15%	
Native Hawaiian/ Other Pacific Islander	676	2,231	967	429	2,002	405	3,174	
	0.68%	2.17%	0.93%	0.42%	1.93%	0.40%	3.09%	
Other	470	475	492	390	368	254	260	
	0.47%	0.46%	0.47%	0.38%	0.35%	0.25%	0.25%	
Two or More Races	2,833	3,535	3,996	4,269	3,791	2,919	2,582	
	2.85%	3.44%	3.85%	4.13%	3.65%	2.85%	2.51%	

Citizens by Voting Age Population Estimate (2010-2014)

	Area 1	Area 2	Area 3	Area 4	Area 5	Area 6	Area 7	Variance
Population	64,644	70,423	74,847	73,023	66,881	69,936	53,442	
Population Variance	-2,955	2,824	7,248	5,424	-718	2,337	-14,157	
	-4.37%	4.18%	10.72%	8.02%	-1.06%	3.46%	-20.94%	
Hispanic/Latino	12,264	15,488	11,145	6,948	9,603	10,204	15,038	
	18.97%	21.99%	14.89%	9.51%	14.36%	14.59%	28.14%	
White	12,374	20,936	42,633	48,567	36,779	52,714	25,595	
	19.14%	29.73%	56.96%	66.51%	54.99%	75.37%	47.89%	
Black/ African American	2,560	1,898	1,385	1,167	1,966	809	5,092	
	3.96%	2.70%	1.85%	1.60%	2.94%	1.16%	9.53%	
American Indian/ Alaska Native	108	123	206	120	108	109	83	
	0.17%	0.17%	0.28%	0.16%	0.16%	0.16%	0.16%	
Asian	35,640	28,571	16,889	14,007	15,654	4,637	4,564	
	55.13%	40.57%	22.56%	19.18%	23.41%	6.63%	8.54%	
Native Hawaiian/ Other Pacific Islander	173	1,611	609	178	729	150	1,732	
	0.27%	2.29%	0.81%	0.24%	1.09%	0.21%	3.24%	
Other	0	0	0	0	0	0	0	
	0.00%	0.00%	0.00%	0.00%	0.00%	0.00%	0.00%	
Two or More Races	1,525	1,796	1,980	2,036	2,042	1,313	1,338	
	2.36%	2.55%	2.65%	2.79%	3.05%	1.88%	2.50%	