



Dial-in Internet and eMail Service

Windows XP Setup Instructions

Key Setup Data

Dial-in number **650 522 9930**

Outgoing Mail Server or SMTP Server **mail.smccd.net**

Log-in name is your District email name **schultz** (**schultz@smccd.net**)

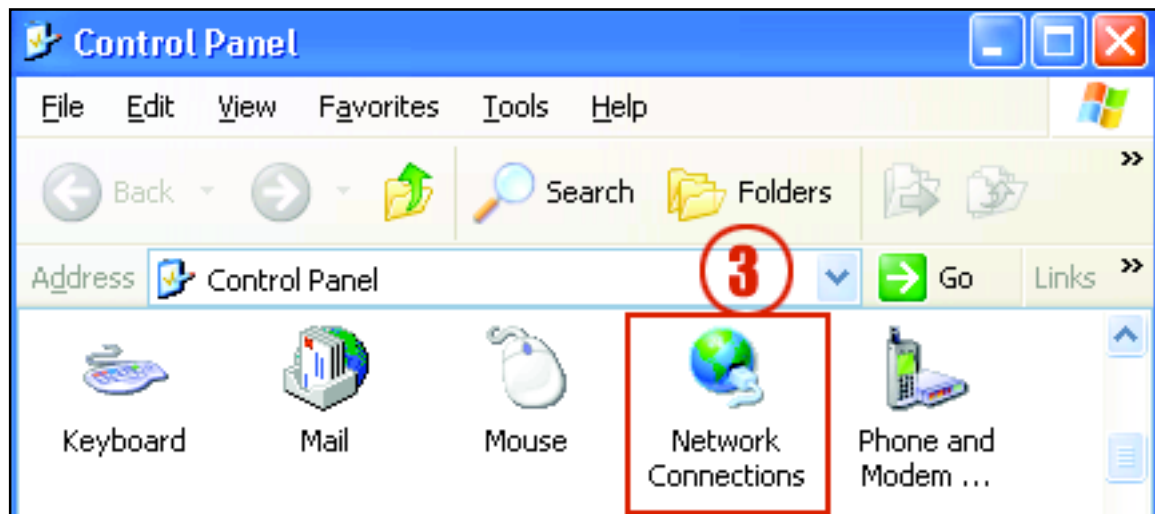
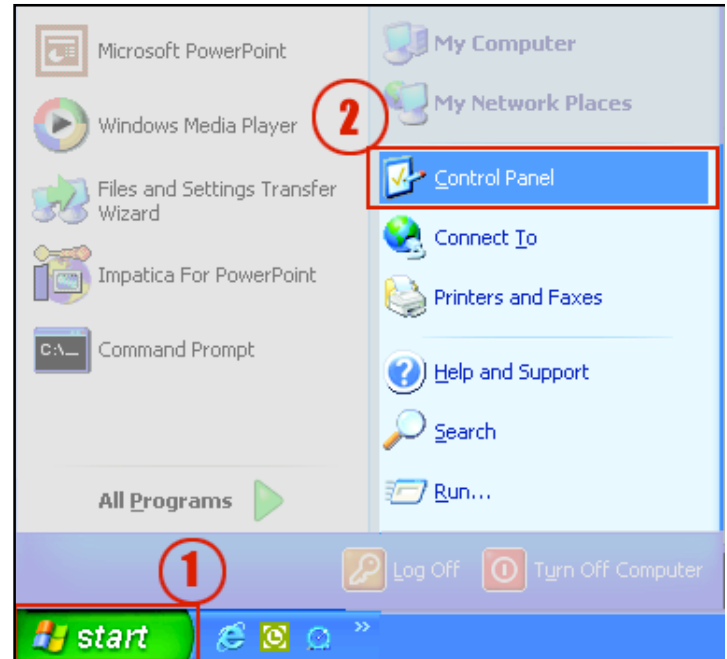
Password **Your_District_email_Password**

Procedure for configuring Windows XP

Step 1: **Select the *Start*** button in the lower left-hand corner of the screen.

Step 2: **Select *Control Panel*** from the pop-up menu.

Step 3: **Select *Network Connections***

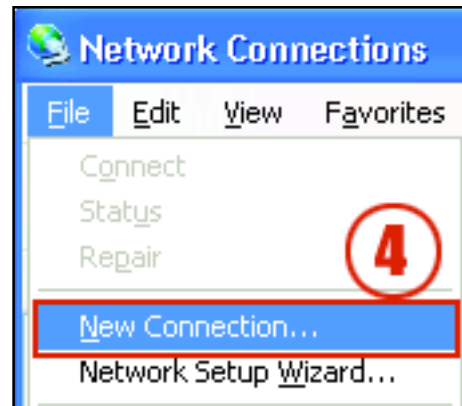




Dial-in Internet and eMail Service

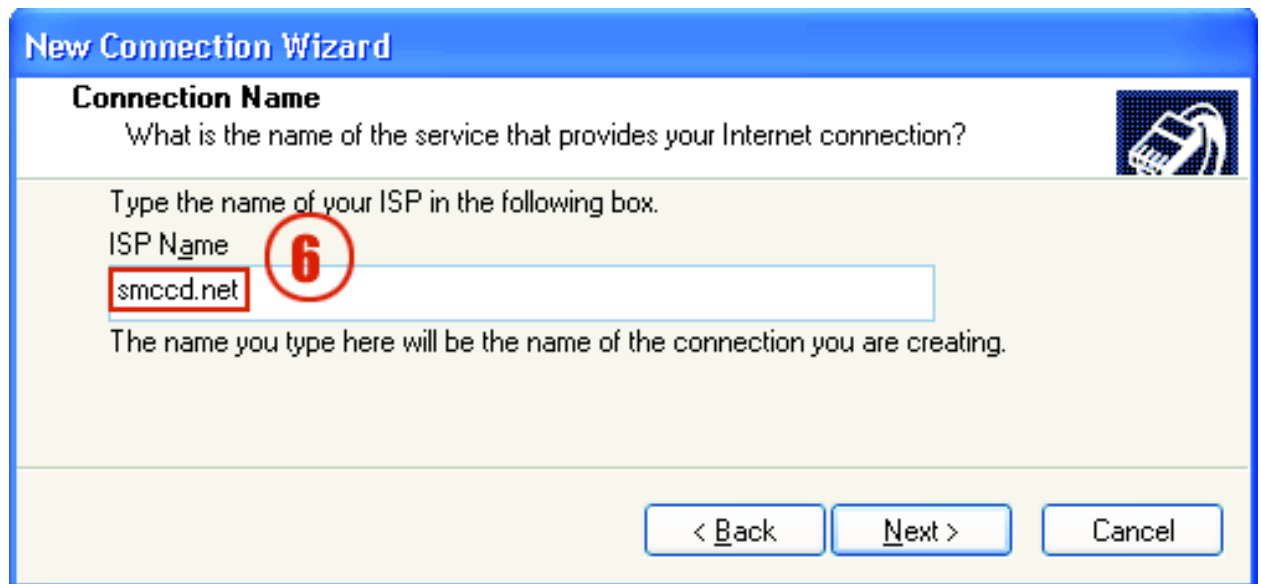
Windows XP Setup Instructions

Step 4: When the **Network Connections** menu opens select **File>New Connection**



Step 5: The **New Connection Wizard** will open. Select **Next >** **Connect to Internet,** **Next >** **Set up my connection manually,** **Next >** **Connect using a dial-up modem,** **Next >**

Step 6: **Enter** the Connection Name **smccd.net** **Next >**





Dial-in Internet and eMail Service

Windows XP Setup Instructions

Step 7: **Enter** the Phone Number to Dial **522 9930** [Next >](#)

New Connection Wizard

Phone Number to Dial

What is your ISP's phone number?

Type the phone number below.

Phone number: **7**

You might need to include a "1" or the area code, or both. If you are not sure you need the extra numbers, dial the phone number on your telephone. If you hear a modem sound, the number dialed is correct.

< Back Next > Cancel

Step 8: **Enter** your account information:

- A. User name is your email name **schultz** (schultz@smccd.net). Do not include @smccd.net
- B. The Password is you're your District email Password
- C. Be sure that the three boxes are checked

[Next >](#)

New Connection Wizard

Internet Account Information

You will need an account name and password to sign in to your Internet account. Type an ISP account name and password, then write down this information and store it in a safe place. (If you have forgotten an existing account name or password, contact your ISP.)

User name: **8A**

Password: **8B**

Confirm password:

8C

- Use this account name and password when anyone connects to the Internet from this computer
- Make this the default Internet connection
- Turn on Internet Connection Firewall for this connection

< Back Next > Cancel



Dial-in Internet and eMail Service

Windows XP Setup Instructions

Step 9: The final step is to complete the configuration by **checking *Add a shortcut to this connection to my desktop*** and **click *Finish***.



To connect to the Internet, **click** on the ***smccd.net shortcut*** on the desktop.

Need help? Contact the smccd.net Help Center @ (650) 574 6543