



Evacuation

Module 16



# Evacuation

Implement when conditions outside the building or off-site are safer than inside or on-site. Requires moving or directing students and staff to move from school buildings to a pre-determined safe location.

Activate nearest fire alarm

Call 9-1-1

Use fire extinguisher if able  
*(Pull-Aim-Squeeze-Sweep)*

Use Stairs, NOT elevators

Assist persons with disabilities

Meet at designated assembly areas

Account for individuals








Re-enter area only when authorized by emergency personnel

# Evacuation Routes

## CAN Building 1

4200 Farm Hill Blvd.

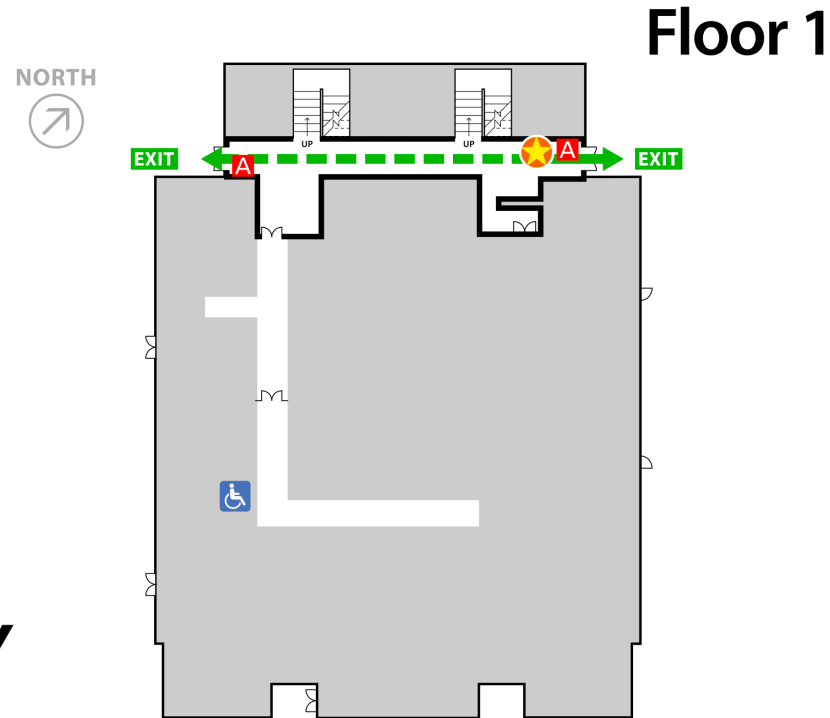
### LEGEND

-  YOU ARE HERE
-  FIRE EXTINGUISHER
-  ALARM PULL STATION
-  ELEVATOR
-  EXIT ROUTE
-  EXIT STAIRS
-  AREA OF REFUGE

**DIAL 911**  
**FOR EMERGENCY**

Repeating beeps and strobing lights indicate alarm.

**IN CASE OF FIRE, PULL FIRE ALARM,  
USE EXIT STAIRS, DO NOT USE ELEVATOR**



Evacuation route maps will be posted conspicuously in each work area. The following information is marked on these maps:

- Emergency exits
- Evacuation routes
- Locations of fire extinguishers
- Fire alarm pull stations' locations
- Emergency assembly areas
- Knox Box
- AEDs
- Lockdown buttons
- Elevator and stairwell locations
- Evacuation chairs
- Lab safety spill kits

All employees have been trained to locate and follow the evacuation route map for their work area

# Evacuation Procedures

---

The EAS System will admit an alarm, followed by a voice command message. This is the signal that all facility personnel must evacuate the facility. This employee alarm system must comply with the requirements of 29 CFR 1910.165. Whenever the alarm sounds, all personnel must evacuate according to the designated primary routes or alternative routes to the predetermined assembly areas or as directed by an Evacuation Monitor. All designated primary and alternative routes are posted in work areas

